

# エジェクター EJECTOR / CBE



## 挿抜に便利な基板エジェクター Standard PCB card ejector

### 特長 Features

- この原理によりコネクタに接続された基板を簡単に引き出せます。
- Provides easy extraction of a connected PCB by using leverage.



スプリングピン取付  
Spring pin mounting

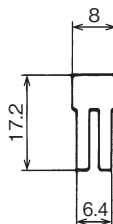
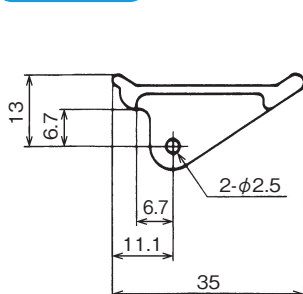


Round hole  
丸孔

### 材料 Material

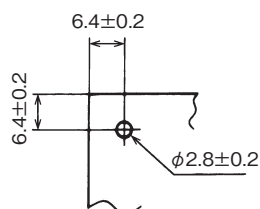
- ナイロン6 (色調: ナチュラル) **UL94 V-2** : CBE-12
- Nylon 6 (Color: Natural)
- ポリアセタール (色調: ナチュラル) **UL94 HB** : CBE-14
- Polyacetal (Color: Natural)
- ポリエチレンテレフタレート (色調: ナチュラル) **UL94 V-0** : CBE-2P
- Polyethylene terephthalate (Color: Natural)

#### CBE-12



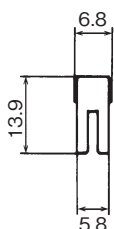
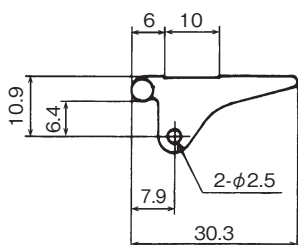
包装単位: 100個  
Std. Package: 100pcs.

#### 取付仕様図 / Specification drawing



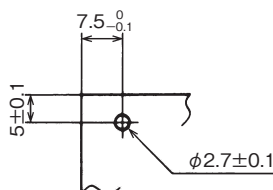
適応板厚 / Applicable panel thickness : =1.6

#### CBE-14



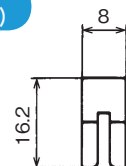
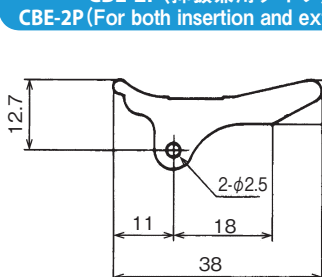
包装単位: 100個  
Std. Package: 100pcs.

#### 取付仕様図 / Specification drawing



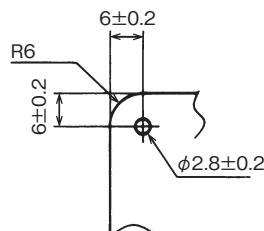
適応板厚 / Applicable panel thickness : =1.6

#### CBE-2P (挿抜兼用タイプ) CBE-2P (For both insertion and extraction)



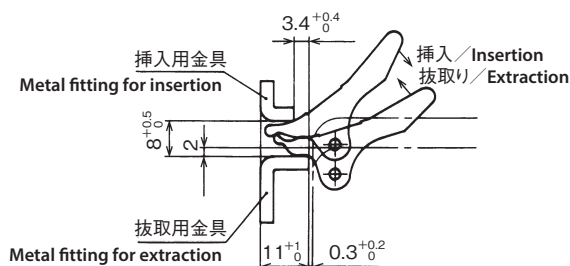
包装単位: 100個  
Std. Package: 100pcs.

#### 取付仕様図 / Specification drawing



適応板厚 / Applicable panel thickness : =1.6

#### 金具取付仕様図 / Specification drawing for metal fitting



(単位 / Unit : mm)