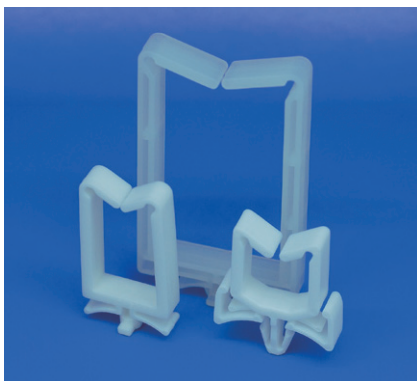


# リユースワイヤーサドル RE-USE WIRE SADDLE / RWS-T, -E



## シャーシ裏の引っ張りが小さい配線クランプ Releasable M-shaped clamp

### 特長 Features

- スナップの取り外しが工具なしで容易にでき、メンテナンス時・分解時の作業性に優れます。
- Snap mounting provides easy maintenance and disassembling with no tools required.

### 材料 Material

- ナイロン66 (色調：ナチュラル) **UL94 V-0 (V-2\*)**
- Nylon 66 (Color : Natural)

※ V0タイプは品番末尾に"V0"が付きます。  
For V0 type, "V0" is added to the end of the part No.  
※ V-2タイプの納期・ロットはお問い合わせ下さい。  
With regard to lead time and lot size of V-2 type, please contact us.



ツイストタイプ/  
Twist Type



Odd-shaped hole  
異形

RWS-T



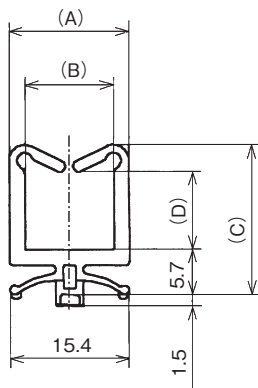
プッシュタイプ/  
Push Type



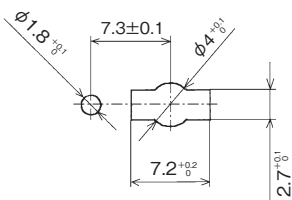
Round hole  
丸孔

RWS-E

### RWS-T



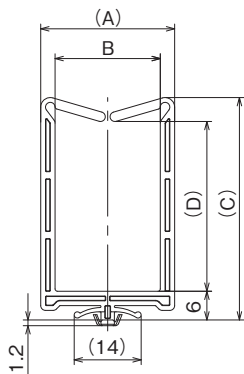
### 取付仕様図 / Specification drawing



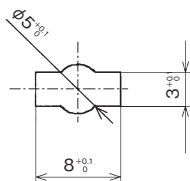
品番 Part No.	(A)	(B)	(C)	(D)	取付孔 Mounting hole size	取付板厚 Panel thickness	包装単位 Std. Package
UL RWS-1T V0	15.5	11.5	14.2	5.0	取付仕様図参照 Refer to Specification drawing	0.8~1.6	200個/pcs.
UL RWS-2T V0			19.2	10.0			
UL RWS-3T V0			28.2	19.0			
UL RWS-4T V0			36.2	27.0			
RWS-1015T-V0	20.0	16.0	20.4	11.2			500個/pcs.

UL...UL1565 取得品 / UL1565 recognized product (単位 / Unit : mm)

### RWS-3522T



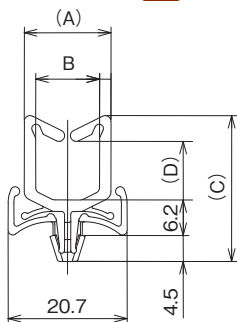
### 取付仕様図 / Specification drawing



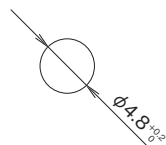
品番 Part No.	(A)	B	(C)	(D)	取付孔 Mounting hole size	取付板厚 Panel thickness	包装単位 Std. Package
UL RWS-3522T	28.0	22.0	46.5	35.5	取付仕様図参照 Refer to Specification drawing	0.8~1.6	100個/pcs.

UL...UL1565 取得品 / UL1565 recognized product (単位 / Unit : mm)

### RWS-E



### 取付仕様図 / Specification drawing



品番 Part No.	(A)	B	(C)	(D)	取付孔 Mounting hole size	取付板厚 Panel thickness	包装単位 Std. Package
UL RWS-2E-V0	15.1	11.1	25.4	10.2	取付仕様図参照 Refer to Specification drawing	0.5~2.0	500個/pcs.

UL...UL1565 取得品 / UL1565 recognized product (単位 / Unit : mm)