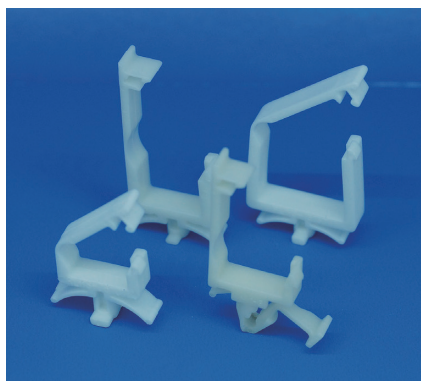


リユースクランプ  
RE-USE CLAMP / RLWS-T, -TL, -S



ロック保持力が強いリユースタイプの配線クランプ  
Releasable cable clamp that provides a secure lock

特長 Features

- スナップの取外しが工具なしで容易にでき、メンテナンス・分解時の作業性に優れます。
- 回して外すツイストタイプとバーを押して外すプッシュタイプがあります。
- Snap mounting provides easy maintenance and disassembling with no tools required.
- Both twist type and push type are available for easy dismount.

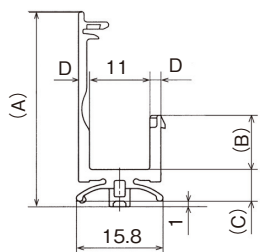
材料 Material

- ナイロン66 (色調：ナチュラル)
- Nylon 66 (Color : Natural)

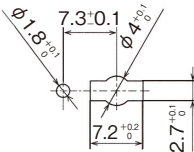
UL94 V-0



RLWS-T

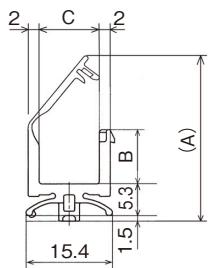


取付仕様図 / Specification drawing

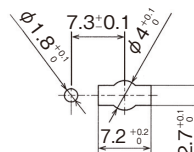


	品番 Part No.	(A)	(B)	(C)	D	取付孔 Mounting hole size	取付板厚 Panel thickness	包装単位 Std. Package
UL	RLWS-1T V0	29.1	4.9	5.3	1.5	取付仕様図参照 Refer to Specification drawing	0.8~1.6	1,000 個/pcs.
UL	RLWS-2T V0	32.8	7.4	5.7	2			500個/pcs.
UL	RLWS-3T V0	35.6	9.9	5.8				

UL ...UL1565 取得品 / UL1565 recognized product (単位/Unit : mm)



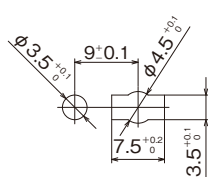
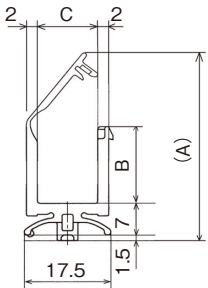
取付仕様図 / Specification drawing



	品番 Part No.	(A)	B	C	取付孔 Mounting hole size	取付板厚 Panel thickness	包装単位 Std. Package
UL	RLWS-1015T V0	32.84	10.4	15	取付仕様図参照 Refer to Specification drawing	0.8~1.6	500 個/pcs.
UL	RLWS-1515T V0	37.84	15.4				
UL	RLWS-2020T V0	46.37	20.4				

UL ...UL1565 取得品 / UL1565 recognized product (単位/Unit : mm)

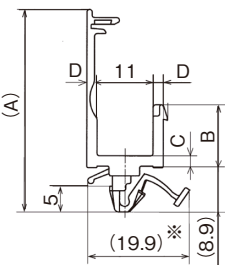
RLWS-TL



	品番 Part No.	(A)	B	C	取付孔 Mounting hole size	取付板厚 Panel thickness	包装単位 Std. Package
UL	RLWS-0510TL V0	26.00	5.4	10	取付仕様図参照 Refer to Specification drawing	0.8~3.2	500 個/pcs.
UL	RLWS-1010TL V0	31.00	10.4				
UL	RLWS-1515TL V0	39.54	15.4				
UL	RLWS-2020TL V0	48.07	20.4				

UL ...UL1565 取得品 / UL1565 recognized product (単位/Unit : mm)

RLWS-S



	品番 Part No.	(A)	B	C	D	取付孔 Mounting hole size	取付板厚 Panel thickness	包装単位 Std. Package
UL	RLWS-1S V0	32.8	6.4	1.5	1.5	φ4.8 <sup>+0.1</sup>	0.5~1.6	1,000 個/pcs.
UL	RLWS-3S V0	39.4	11.9	2.0	2.0			

UL ...UL1565 取得品 / UL1565 recognized product (単位/Unit : mm)

※RLWS-1S V0は(19.5)  
(19.5)mm for RLWS-1S V0